

GOOD THINGS REALLY DO COME IN SMALL PARCELS.

THE THALAO ST 3.17 SPA, slips easily into any surroundings thanks to its small footprint. Small in size but large in spirit, the THALAO ST 3.17 spa features two bucket seats and 1 lounger where 17 massage jets and 10 air jets (blower version) provide an effective, soothing and stress relieving massage.

WEIGHT/ VOLUME/ DIMENSIONS

- Empty weight: 250 Kg
- Full weight: 1,000 Kg
- Water volume: 750 litres
- Portable version: 213 cm (L) x 168 cm (W) x 80 cm (H)
- In-ground version: 213 cm (L) x 168 cm (W) x 80 cm (H)
- Removable steps: 106 cm (L) x 55 cm (W) x 42 cm (H)



1 lounger



2 bucket seats

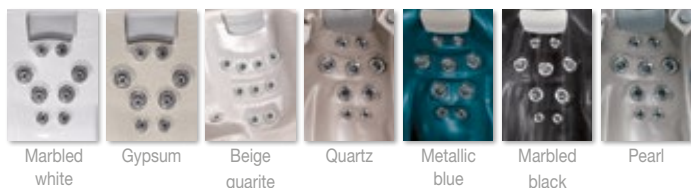


1 child seat

Model shown: marbled white, classic Wenge surround (solid, oiled wood)

COLOURS (SHELL & HOUSING)

7 spa shell colours



Marbled white

Gypsum

Beige quarite

Quartz

Metallic blue

Marbled black

Pearl

5 surround colours

(3 in composite wood as standard, 2 in solid, oiled wood as options)



Coral

Grey

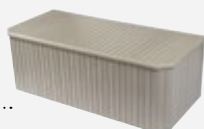
Havana

Doussie

Wenge

STANDARD EQUIPMENT

STEPS



BP601 SPA PACK



RIGID ISOTHERMAL COVER



CONTROLS

- 1 Digital control pad
- 3 Air jet controls
- 1 Diverting valve

OTHER EQUIPMENT

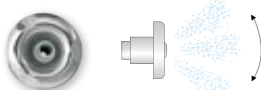
- 1 Multicolour LED light
- 1 Skimmer (2 cartridges, 3.2 m²)
- 3 Head rests
- 2 Main drains
- 1 Start-up kit
- 1 Drainage valve

17 STAINLESS STEEL MASSAGE JETS (HYDROMASSAGE)

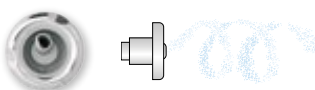
5 Directional jets 70 mm



7 Directional jets 95 mm



5 Rotating jets 95 mm



OPTIONAL JETS

2 Directional foot jets 70 mm



10 Air massage jets



Made in France



AIR JET CONTROL

DIVERTING VALVE

AIR JET CONTROL

LOUNGER

Neck: 2 directional jets 70mm
Shoulders: 3 rotating jets 95mm
Back: 2 rotating jets 95mm
Lumbar: 2 directional jets 70mm
Legs: 6 air jets
(with *Blower option*)
Feet: 2 directional jets 70mm
(with *foot jet option*)

DIGITAL CONTROL PAD

SKIMMER (2 CARTRIDGES)

BUCKET SEAT

Neck: 2 directional jets 95mm
Back: 1 directional jet 95mm
Legs: 2 air jets (with *Blower option*)
Calves: 2 directional jets 95mm

MULTICOLOUR LED LIGHT

2 MAIN DRAINS

BUCKET SEAT

Neck: 1 directional jet 95mm
Back: 1 directional jet 95mm
Legs: 2 air jets (with *Blower option*)

CHILD'S SEAT

1 directional jet 70mm

AIR JET CONTROL

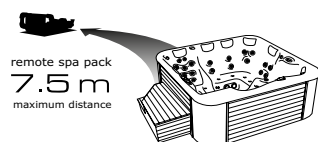
OPTIONAL EQUIPMENT

- Solid, oiled wood classic surround
- Solid, oiled wood, master crafted surround
- Spatouch touch screen interface
- Wi-Fi/Internet module
- Foot jets
- Waterfall
- Anti-bacterial felt insulation
- MicroSilk aerotherapy or Blower aromatherapy
- Chromatherapy
- Remote installation kit

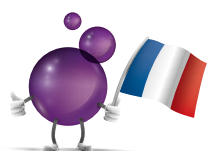


MASTER CRAFTED SURROUND

Aesthetic perfection. Hand-crafted by a master carpenter, it discreetly houses the motor and ensures harmonious integration of the spa into the home. Wood: wenge or doussie. Meticulous finish. No visible screws.



Remote installation kits (available exclusively from Procopi), contain the various pipes and tubes necessary to install the spa pack at a distance of up to 7.50m from the spa for the bathers' acoustic comfort. If the MicroSilk option is installed, the spa pack may not be remotely installed.

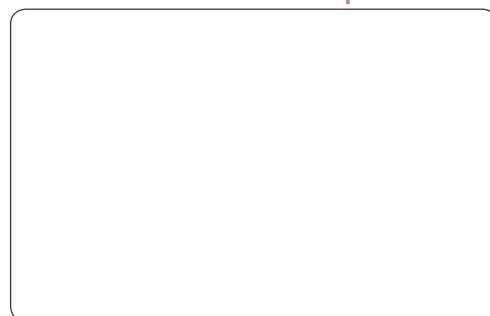


Made in France

Thalao
by PROCOPi



Dealer's stamp



PROCOPI
Pool & Spa Equipment